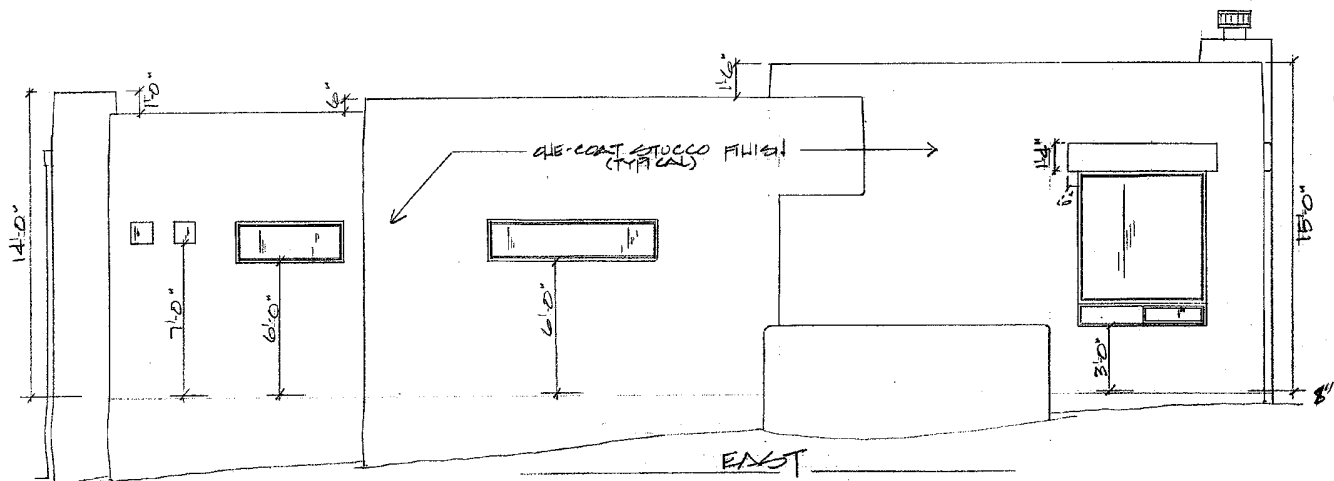
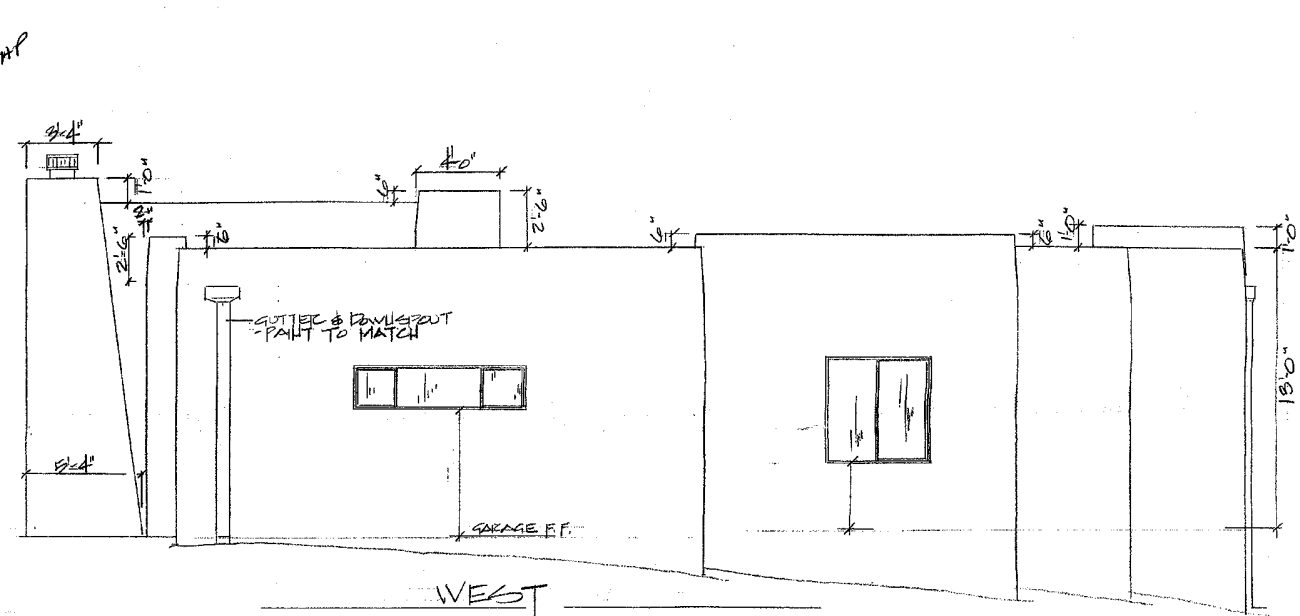


NORTH (FRONT)

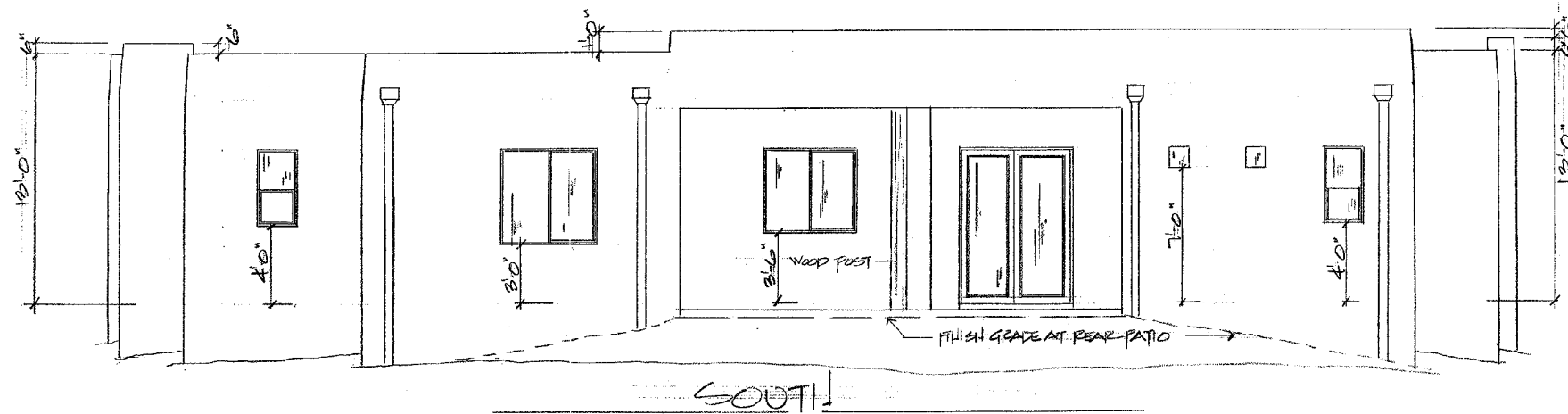


EAST



WEST

• UNLESS NOTED, GRADES SHOWN ARE EXISTING



SOUTH

REVIEWED FOR  
2003 CODE COMPLIANCE  
YAVAPAI COUNTY BUILDING SAFETY

A NEW HOME BY: <b>EAGLE CLIFF DEVELOPMENT</b>		SHEET <b>4</b>
PARCEL # 405-28-140 SEDONA, ARIZONA		
ELEVATIONS		OF 7
DATE: 3/2/2006	SCALE: 1/4" = 1'-0"	JOB NO.
DR. BY: E. SEITZ		2811
REVISIONS:		